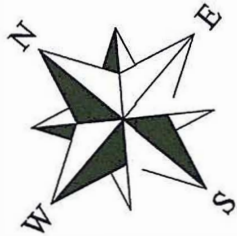
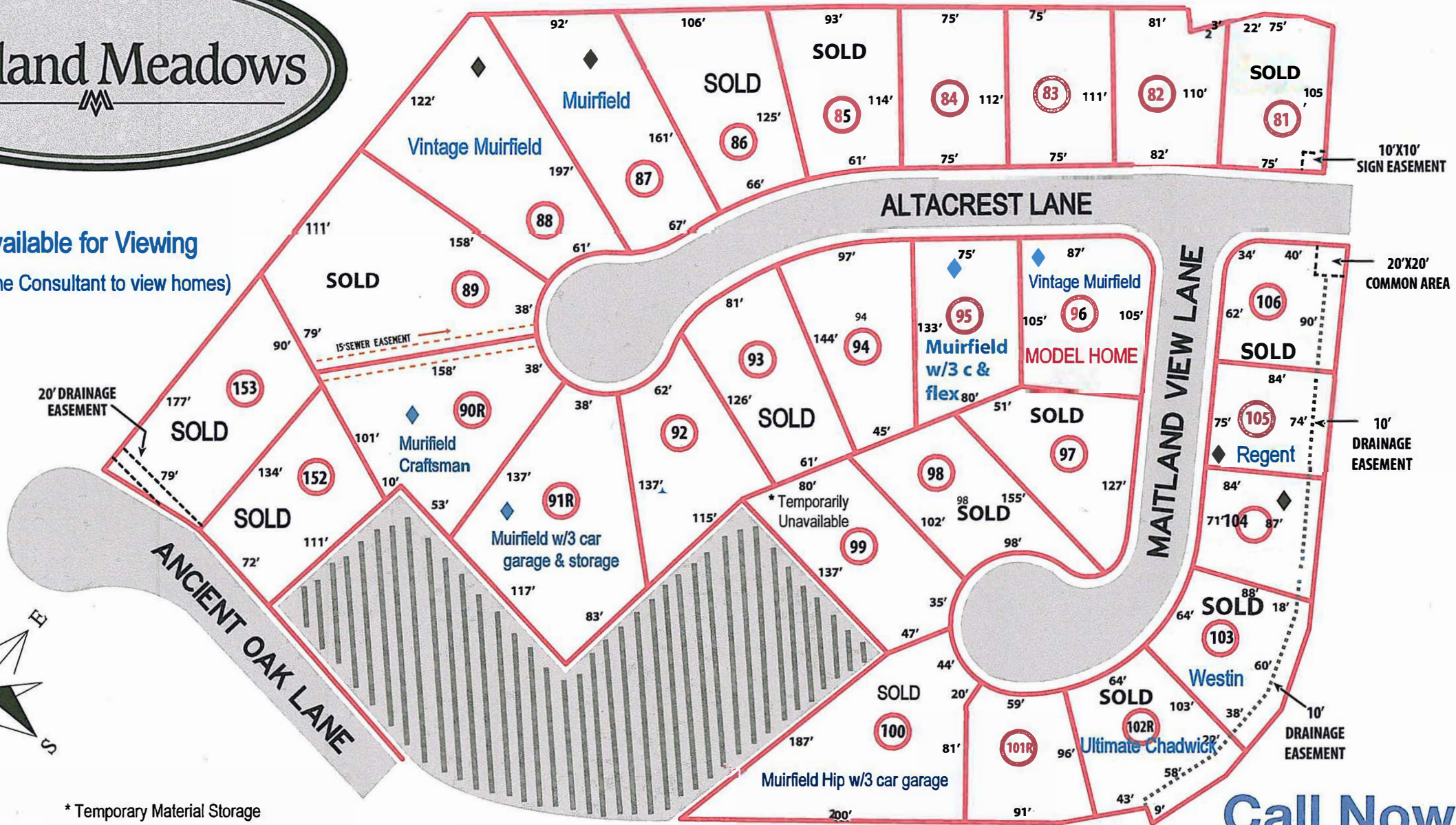


Maitland Meadows

◆ Homes Available for Viewing
 (see New Home Consultant to view homes)



* Temporary Material Storage

- 15' Utility & Drainage Easement
- - - - - 20' Utility & Drainage Easement

Sales Plat is for reference only, lot dimensions may vary from recorded plat. Ask sales agent to view recorded plat.

Call Now
(865) 922-2600



www.WorleyBuildersInc.com